



SY-K7VTA PRO Motherboard

Quick Start Guide

Introduction

Hardware
Installation

Quick BIOS
Setup

The SOYO CI

SY-K7VTA PRO Motherboard

Socket 462 for AMD® Athlon/Duron™ processors
VIA KT133A AGP/PCI Motherboard
266 MHz Front Side Bus supported
ATX Form Factor

Copyright © 2001 bySoyo Computer Inc.

Trademarks:

Soyo is the registered trademark of Soyo Computer Inc. All trademarks are the properties of their owners.

Product Rights:

All names of the product and corporate mentioned in this publication are used for identification purposes only. The registered trademarks and copyrights belong to their respective companies.

Copyright Notice:

All rights reserved. This manual has been copyrighted by Soyo Computer Inc. No part of this manual may be reproduced, transmitted, transcribed, translated into any other language, or stored in a retrieval system, in any form or by any means, such as by electronic, mechanical, magnetic, optical, chemical, manual or otherwise, without permission in writing from Soyo Computer Inc.

Disclaimer:

Soyo Computer Inc. makes no representations or warranties regarding the contents of this manual. We reserve the right to amend the manual or revise the specifications of the product described in it from time to time without obligation to notify any person of such revision or amend. The information contained in this manual is provided to our customers for general use. Customers should be aware that the personal computer field is subject to many patents. All of our customers should ensure that their use of our products does not infringe upon any patents. It is the policy of Soyo Computer Inc. to respect the valid patent rights of third parties and not to infringe upon or to cause others to infringe upon such rights.

Restricted Rights Legend:

Use, duplication, or disclosure by the Government is subject to restrictions set forth in subparagraph (c)(1)(ii) of the Rights in Technical Data and Computer Software clause at 252.277-7013.

About This Guide:

This Quick Start Guide can help system manufacturers and end users in setting up and installing the Motherboard. Information in this guide has been carefully checked for reliability; however, to the correctness of the contents there is no guarantee given. The information in this document is subject to amend without notice.

For further information, please visit our **Web Site** on the Internet. The address is "<http://www.soyo.com.tw>".

K7VTA PRO Serial - Version 1.1 - Edition: May 2001

* These specifications are subject to amend without notice

1 Introduction

Congratulations on your purchase of the **SY-K7VTA PRO** Motherboard. This *Quick Start Guide* illustrates the steps for installing and setting up your new Motherboard.

This guide provide users with the basic steps of Motherboard setting and operation. For further information, please refer to the *SY-K7VTA PRO User's Guide* that came with your Motherboard.

Unpacking

When unpacking the Motherboard, check for the following items:

◆ The SY-K7VTA PRO KT133A AGP/PCI/ISA Motherboard



◆ The Quick Start Guide



◆ The Installation CD-ROM



◆ SOYO Bonus Pack CD-ROM



◆ One IDE Device ATA 66 Flat Cable



◆ One Floppy Disk Drive Flat Cable

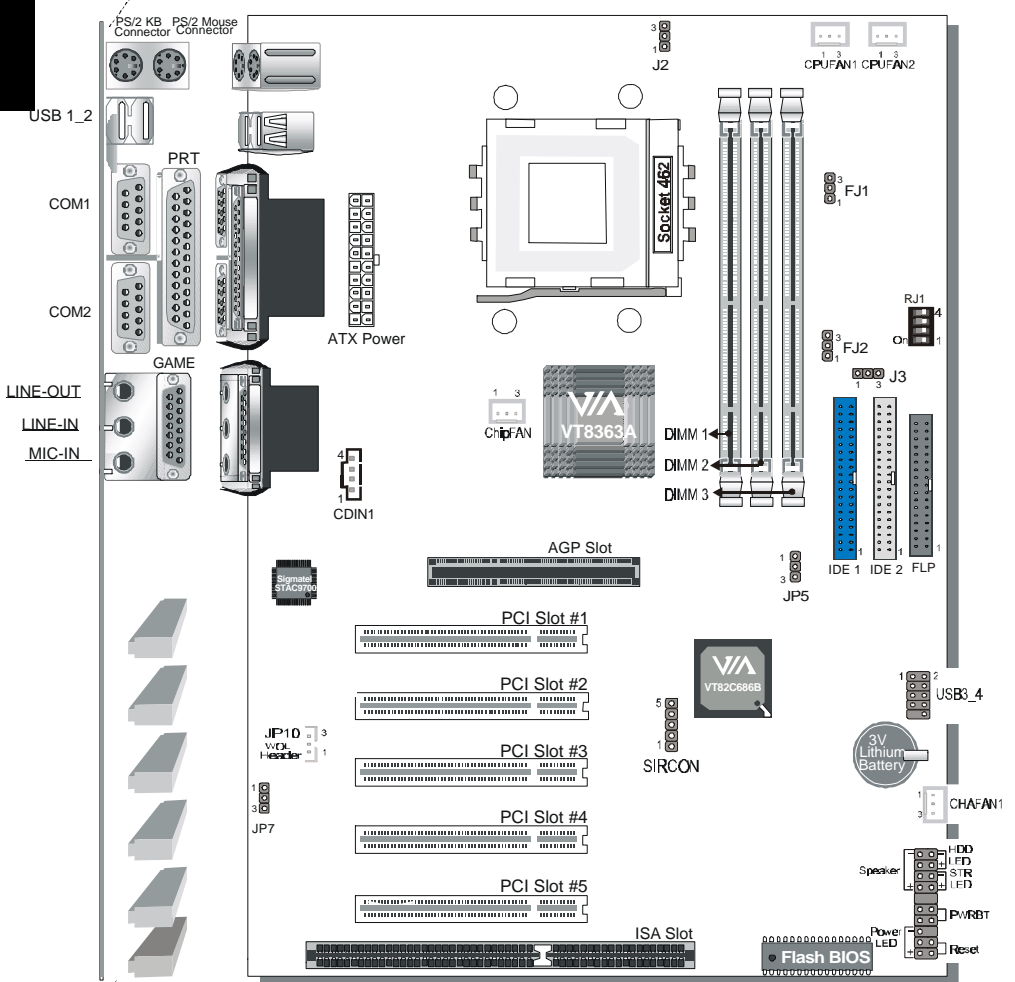


◆ One Heat Sink Compound



SY-K7VTA PRO Quick Start Guide

SY-K7VTA PRO Motherboard Layout



Key Features

- Supports Socket A (Socket 462) AMD® processors
 - i **X**Supports 200MHz Front Side Bus DDR(Double Data Rate) transfer on Athlon(750MHz~1.2GHz) Duron™(600MHz~800MHz)
 - i **X**Supports 266MHz Front Side Bus DDR (Double Data Rate) transfer on Athlon(1GHz~1.2GHz)
- PC99, ACPI
- Ultra DMA33/66/100 (ATA 33/66/100) EIDE
- Supports Wake-On-LAN (WOL)
- Power-on by RTC alarm
- Supports onboard hardware monitoring and includes Hardware Doctor™ utility
- Supports PC133/ PC100 SDRAM and Virtual Channel Memory (VCM) SDRAM up to 1.5GB memory space
- Supports multiple-boot function
- 5 x 32-bit bus mastering PCI slots
- 1 x 32-bit AGP 1X/2X/4X slot
- 4 x USB ports onboard
- 1 x IrDA port
- ATX power connector
- 1 x 16-bit ISA slot
- 3 x 64-bit DIMM slots
- Supports Power Failure Resume
- Easy CPU settings in BIOS with the “SOYO COMBO setup”
- Supports Suspend to RAM
- Supports on-board AC97 Audio
- Supports CPU voltage adjustment
- Support “SOYO Voice Doctor” function
- Supports “SOYO F.O.C.”(Fan Of Control) function

2 Installation



To avoid damage to your Motherboard, please follow these simple rules while handling this equipment:

- Before handling the Motherboard, ground yourself by touching an unpainted portion of the system's metal chassis.
- Remove the Motherboard from its anti-static packaging. Hold the motherboard by the edges and avoid touching its components.
- Check the Motherboard for damage. If any chip appears to be loose, press carefully to seat it firmly in its socket.

Follow the directions in this section which is designed to guide you through a quick and correct method to install your new **SY-K7VTA PRO** Motherboard. For detailed information, please refer to the *SY-K7VTA PRO Motherboard User's guide and Technical Reference* online manual in the CD-ROM package that came with your Motherboard.

Gather and prepare all necessary components to complete the installation successfully:

- ◆ AMD® Socket462 processor with built-in CPU cooling fan (boxed type)
- ◆ SDRAM module(s)
- ◆ Computer case with adequate power supply unit
- ◆ Monitor
- ◆ PS/2 Keyboard
- ◆ Pointing Device (PS/2 Mouse)
- ◆ Speaker(s) (optional)
- ◆ Disk Drives: HDD, CD-ROM, Floppy drive...
- ◆ External Peripherals: Printer, Plotter, and Modem (optional)
- ◆ Internal Peripherals: Modem and LAN cards (optional)

Note: 1. If you want to use an external speaker connected to "Line-out" port, please make sure to use an "amplified speaker" that can generate proper output sound volume.

Install the Motherboard

To perform the installation of your new **SY-K7VTA PRO** Motherboard, follow the steps below:



FOC (Fan-Off Control)

The newly designed SOYO ‘FOC’ is based on the concept of total protection for CPU, which is very different from currently seen on the market. The H/W control function is used to see a passive security system of monitoring and warning. ‘FOC’, designed by SOYO, gives emphasis on the concept of total protection. S/W Simultaneous Signal Follow-ups techniques and Auto Power Off System are included to prevent all possible damage caused by the MAL-functioning of the CPU fan. With the help of ‘O/S On Time Monitoring And Warning’ function, provided by the H/W monitoring system, the double-protection purpose is achieved.

‘FOC’ includes the following functions:

- (1) Simultaneous Signal Follow Ups: Before the system enters the O/S, H/W will detect the signals of the CPU fan pins, get their revolution information and send it to the BIOS.
- (2) Auto Power Off System: If the BIOS gets the information of CPU fan revolution, it goes on working normally. If not, it will inform the system and have the power supply disconnected immediately. Thus, the CPU is protected from over heating.

Note: The following must be observed to secure the normal functioning of ‘Fan-Off Control’:

1. CPU fan with sensor pins must be used.
2. CPU fans approved by AMD are strongly recommended.
3. The ‘HOT KEY’ function is provided for the CPU fans without sensor pins, to avoid the power off. Users may press the ‘Insert’ key to jump over the ‘Power Off’ mode; go to the BIOS and disable ‘FOC’. Now system can be booted normally.
4. The power connector of the CPU fan must be connected to the specified ‘CPU Fan Connector’ on the motherboard to secure the normal functioning of the system.

We provide the following User-Friendly protection features:

1. Fan-Off Control: The motherboard detects the status of the CPU fan and protects the CPU by automatically disconnecting the power supply. The default value of this function is Enable. After booting up, the user may disable it.
2. CPU Socket Sticker: Users will find a sticker on the CPU socket, which reminds them of the correct usage of the K7 CPU.
3. Heat Dissipation Paste: Heat Dissipation Paste is included for all Socket-A motherboards, to enhance the heat dissipation capability.

SY-K7VTA PRO Quick Start Guide

Furthermore, we strongly recommend our users to enable the function of HW monitoring in the BIOS. This function, together with the FOC, provide the total protection to the CPU and allow it to maximize its performance.

Step 1. CPU Installation

Mark your CPU Frequency: **Record the working frequency of your CPU that should be clearly marked on the CPU cover.**

200MHz FSB DDR transfer on Athlon

| | | | |
|--|--|--|--|
| <input type="checkbox"/> 750 MHz (100x7.5) | <input type="checkbox"/> 800 MHz (100x8.0) | <input type="checkbox"/> 850 MHz (100x8.5) | <input type="checkbox"/> 900 MHz (100x9.0) |
| <input type="checkbox"/> 950 MHz (100x9.5) | <input type="checkbox"/> 1000 MHz (100x10.0) | <input type="checkbox"/> 1.1GHz (100x11.0) | <input type="checkbox"/> 1.2GHz(100x12.0) |

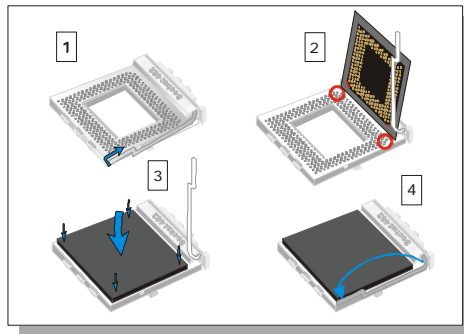
200MHz FSB DDR transfer on Duron

| | | | | |
|--|--|--|--|--|
| <input type="checkbox"/> 600MHz(100x6.0) | <input type="checkbox"/> 650MHz(100x6.5) | <input type="checkbox"/> 700MHz(100x7.0) | <input type="checkbox"/> 750MHz(100x7.5) | <input type="checkbox"/> 800MHz(100x8.0) |
|--|--|--|--|--|

266MHz Front Side Bus DDR transfer on Athlon

| | | | |
|--|---|--|--------------------------|
| <input type="checkbox"/> 1 GHz (133x7.5) | <input type="checkbox"/> 1.13 GHz (133x8.5) | <input type="checkbox"/> 1.2 GHz (133x9.0) | <input type="checkbox"/> |
|--|---|--|--------------------------|

CPU Mount Procedure: To mount the AMD® & Athlon/Duron™ processor that you have purchased separately, follow these instructions.



1. Lift the socket handle up to a vertical position.
2. Align the blunt edge of the CPU with the matching pinhole edge on the socket.
3. Seat the processor in the socket completely and without forcing.
4. Then close the socket handle to secure the CPU in place.



Remember to connect the CPU Cooling Fan to the appropriate power connector on the Motherboard. *The fan is a key component that stabilizes the system. It prevents the equipment from overheating and prolongs the life of your CPU.*

Step 2. Connections to the Motherboard

This section tells how to connect internal peripherals and the power supply to the Motherboard.

The internal peripherals consist of IDE devices (HDD, CD-ROM), Floppy Disk Drive, Chassis Fan, Front Panel Devices (STR LED Internal Speaker, Reset Button and IDE LED Switch.), Wake-On-LAN card, VGA card, Sound Card, and other devices.

For more details on connecting internal and external peripherals to your new SY-K7VTA PRO Motherboard, please refer to *SY-K7VTA PRO Motherboard User's Guide and Technical Reference* online manual on the CD-ROM.

Connectors and Plug-ins

| Standard IrDA (Infrared Device Header): SIRCON | | | | | Wake-On-LAN Header: J10 | | | |
|--|---------|---------|---------------------------|--------------|-------------------------|------------------------|-------------|-------|
| Pin1 | Pin2 | Pin3 | Pin4 | Pin5 | Pin1 | Pin2 | Pin3 | |
| +5V | NC | IRRX | GND | IRTX | 5VSB | GND | RING | |
| USB3_4: USB3 | | | | USB3_4: USB4 | | | | |
| Pin1 | Pin3 | Pin5 | Pin7 | Pin2 | Pin4 | Pin6 | Pin8 | |
| +5V | Data(-) | Data(+) | GND | +5V | Data(-) | Data(+) | GND | |
| CPU Cooling Fan: CPUFAN1 | | | CPU Cooling Fan: CPUFAN2 | | | | | |
| Pin1 | Pin2 | Pin3 | Pin1 | Pin2 | Pin3 | | | |
| GND | +12V | SENSOR | GND | +12V | NC | | | |
| Chassis Fan: CHAFAN | | | Chip Cooling Fan: ChipFAN | | | | | |
| Pin1 | Pin2 | Pin3 | Pin1 | Pin2 | Pin3 | | | |
| GND | +12V | SENSOR | GND | +12V | NC | | | |
| CD Line-in: CDIN1 | | | | | | | | |
| Connect the CD Line-in cord from the CD-ROM device to the matching header CDIN1 | | | | | Pin 1 | Pin 2 | Pin 3 | Pin 4 |
| | | | | | L | G | G | R |
| Power LED | | | | | | | | |
| HDD LED | | STR LED | | PWRBT | | Reset | | |
| Pin1 | Pin2 | Pin3 | Pin4 | Pin1 | Pin2 | Pin3 | Pin4 | |
| LED | NC | GND | NC | LED | NC | GND | NC | |
| Speaker | | | | | | | | |
| Pin1 | Pin2 | Pin3 | Pin4 | Pin1 | Pin2 | Pin3 | Pin4 | |
| VCC | NC | NC | Speaker out | VCC | NC | NC | Speaker out | |
| HDD LED | | PWRBT | | RESET | | STR LED _i ° | | |
| Pin1 | Pin2 | Pin1 | Pin2 | Pin1 | Pin2 | Pin1 | Pin2 | |
| LED | GND | PW-BT | GND | Power RST | GND | LED Anode | GND | |
| ATX POWER On/Off : PWRBT | | | | | | | | |
| Connect your power switch to this header (momentary switch type). | | | | | | | | |
| To turn off the system, please press this switch and hold down for longer than 4 seconds. | | | | | | | | |

SY-K7VTA PRO Quick Start Guide

ATX Power Supply: ATX PW

Attach the ATX Power cable to this connector. (This motherboard requires an ATX power supply, an AT power supply can NOT be used.)

When using the Power-On by PS/2 Keyboard function, please make sure the ATX power supply is able to provide at least 720mA on the 5V Standby lead (5VSB) in order to meet the standard ATX specifications.

Note: The STR LED is connected to the Voltage that feeds the DIMM sockets. Therefore the following table applies:

| | Suspend to RAM | Normal Operation | Power Off |
|---------|----------------|------------------|-----------|
| STR LED | Blinking | ON | OFF |

Step 3. Configure Memory

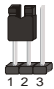



Supports PC133/ PC100 SDRAM and Virtual Channel Memory (VCM) SDRAM up to 3 DIMMs and using system memory up to 1.5GB.

Memory Configuration Table

| Number of Memory Modules | DIMM 1 | DIMM 2 | DIMM3 |
|--------------------------|----------------------|--------|-------|
| RAM Type | SDRAM/ VCM SDRAM | | |
| Memory Module Size (MB) | 32/64/128/256/512 MB | | |

Step 4. Ratio Adjustment Setting (RJ1)

Refer to the following table to set the Frequency Multiplier of your CPU.

| Frequency Multiplier Setting | J2 | J3 |
|------------------------------|---|---|
| Auto | Short Pin1-2  | Short Pin1-2  |
| Manual | Short Pin2-3  | Short Pin2-3  |

If you set ratio to manual and configure the RJ1 jumper to the settings that match your CPU speed, as follow table:

| RJ1 | 1 | 2 | 3 | 4 | RJ1 | 1 | 2 | 3 | 4 |
|-----|-----|-----|-----|-----|------|-----|-----|-----|-----|
| 5 | on | off | on | on | 9 | off | off | on | on |
| 5.5 | on | off | on | off | 9.5 | off | off | on | off |
| 6 | on | off | off | on | 10 | off | off | off | on |
| 6.5 | on | off | off | off | 10.5 | off | off | off | off |
| 7 | off | on | on | on | 11 | on | on | on | on |
| 7.5 | off | on | on | off | 11.5 | on | on | on | off |
| 8 | off | on | off | on | 12 | on | on | off | on |
| 8.5 | off | on | off | off | 12.5 | on | on | off | off |





Note: SOYO does not guarantee system stability if the user over clocks the system. Any malfunctions due to over-clocking are not covered by the warranty.

Step 5. CPU FSB Setting (FJ1,FJ2)

For certain AMD™ CPUs, the multiplier is not locked such that setting a multiplier higher than specified on the CPU is possible. For technical details read the following:

However, the FSB Frequency can also be set through jumpers FJ1 and FJ2 and it may therefore differ from the Frequency the CPU specifies. Doing so may however force your CPU to operate out of its specifications and therefore SOYO can not guarantee the proper functioning of your system.

Refer to the following table:

| CPU FSB Setting | FJ1 | FJ2 |
|-----------------|---|---|
| 200MHz | Short Pin2-3  | Short Pin2-3  |
| 266MHz | Short Pin1-2  | Short Pin1-2  |

SY-K7VTA PRO Quick Start Guide

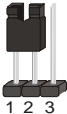

● Voice Doctor

If the system does not boot-up properly, the Voice Doctor will inform the user by voice through internal/external speaker at what point in boot-up sequence the problem arises.

Below are the possible errors the user may encounter:

1. The Processor might be damage or not installed properly
2. The memory module might be damage or not installed properly
3. VGA card might be damage or not inserted properly
4. No Keyboard connected
5. Defective HD-Driver (IDE)
6. Floppy might have an error



Voice Doctor supports two language, refer the table below on the language you prefer.

| Voice Doctor's Language | English Language | Chinese Language |
|-------------------------|--|--|
| JP7 Setting | Short pin 1-2  | Short pin 2-3  |

● CMOS Clear (JP5)

In some cases the CMOS memory may contain wrong data, follow the steps below to clear the CMOS memory.

1. Clear the CMOS memory by momentarily shorting pin 2-3 on jumper JP5. This jumper can be easily identified by its white colored cap.
2. Then put the jumper back to 1-2 to allow writing of new data into the CMOS memory.

| CMOS Clearing | Clear CMOS Data | Retain CMOS Data |
|---------------|---|---|
| JP5 Setting | Short pin 2-3 for at least 5 seconds to clear the CMOS  | Short pin 1-2 to retain new settings  |

Note: You must unplug the ATX power cable from the ATX power connector when performing the CMOS Clear operation.

3 Quick BIOS Setup

This Motherboard does not use any hardware jumpers to set the CPU frequency. Instead, CPU settings are software configurable with the BIOS **[SOYO COMBO SETUP]**. The **[SOYO COMBO SETUP]** combines the main parameters that you need to configure, all in one menu, for a quick setup in BIOS.

After the hardware installation is complete, turn the power switch on, then press the **** key during the system diagnostic checks to enter the Award BIOS Setup program. The CMOS SETUP UTILITY will be shown on the screen. Then, follow these steps to configure the CPU settings.

Step 1. Select **[STANDARD CMOS SETUP]**

Set **[Date/Time]** and **[Floppy drive type]**, then set **[Hard Disk Type]** to "Auto".

Step 2. Select **[LOAD SETUP DEFAULT]**

Select the "LOAD SETUP DEFAULT" menu and type "Y" at the prompt to load the BIOS optimal setup.

Step 3. Select **[SAVE & EXIT SETUP]**

Press **<Enter>** to save the new configuration to the CMOS memory, and continue the boot sequence.

4 The SOYO CD

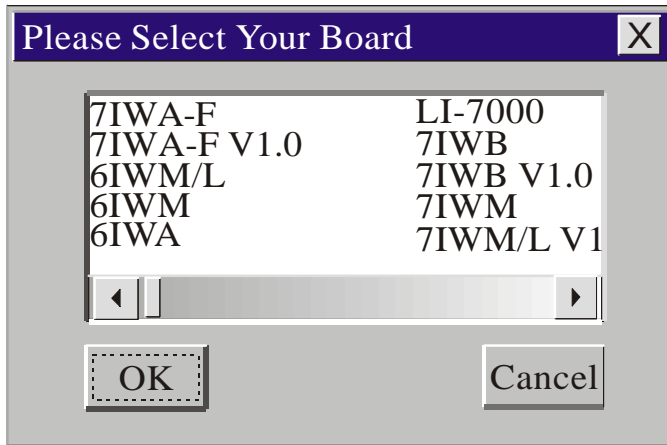


The SOYO-CD will NOT autorun if you use it on an Operating System other than Windows 9x or NT.

Your SY-K7VTA PRO Motherboard comes with a CD-ROM labeled "SOYO CD." The SOYO CD contains (1) the user's manual file for your new Motherboard, (2) the drivers/software available for installation, and (3) a database in HTML format with information on SOYO Motherboards and other products.

Step 1. Insert the SOYO CD into the CD-ROM drive

If you use Windows NT, the SOYO-CD will not detect your motherboard type. In that case the following dialog will pop up, please choose your motherboard and press OK. Now the SOYO-CD Start Up Menu will be shown.



(SOYO CD Start Up Program Menu)

If you use Windows 95 or 98, the SOYO CD Start Up Program automatically detects which SOYO Motherboard you own and displays the corresponding model name.



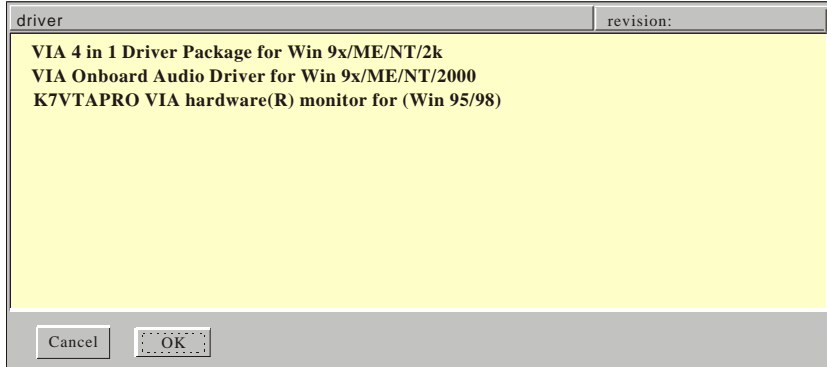
The user's manual files included on the SOYO CD are in PDF (Postscript Document) format. In order to read a PDF file, the appropriate Acrobat Reader software must be installed in your system.

Note: The Start Up program automatically detects if the Acrobat Reader utility is already present in your system, and otherwise prompts you on whether or not you want to install it. You must install the Acrobat Reader utility to be able to read the user's manual file. Follow the instructions on your screen during installation, then once the installation is completed, restart your system and re-run the SOYO CD.

Step 2. Install Drivers and Utilities

Click the **Install Drivers** button to display the list of drivers/ software that can be installed with your Motherboard. The Start Up program displays the drivers available for the particular model of Motherboard you own. We recommend that you only install those drivers.

SY-K7VTA PRO Quick Start Guide



(Driver Installation Menu)

A short description of all available drivers follows:

➤ **VIA 4in1 Driver Package for Win 9x/ME/NT/2k**

The 4 in 1 Driver Package includes all drivers your motherboard needs. After selecting this Driver Package, one driver will be installed automatically (the IRQ remapping utility), the other three are installed if selected. By default all three drivers are selected. A description of the 4 drivers follows:

— **Bus Master PCI IDE Driver**

This driver will speed up the data-transfer rate to and from the harddisk.

— **AGP VxD Driver**

This driver must be installed in order to be able to make use of the on-board AGP Video functionality.

— **VIA Chipset Functions Registry**

This driver will make the necessary changes to the Windows registry, in order to make sure that Windows has no problems recognizing your VIA chipset.

— **IRQ remapping utility (This driver is installed automatically)**

This utility will remap the IRQ lines to make sure that everything functions properly under Windows.

➤ **VIA Onboard Audio Driver for Win 9x/ME/NT/2000**

You have to install the drivers before installing any application for the Onboard Audio.

➤ **K7VTAPRO VIA hardware(R) monitor for (Win 95/98)**

Your motherboard comes with a hardware monitoring IC. By installing this utility Temperature, Fan speed and Voltages can be monitored. It is also possible to set alarms when current system values exceed or fall below pre-set values.

Select which driver you want to install and click **OK**, or click **Cancel** to abort the driver installation and return to the main menu.

Note: Once you have selected a driver, the system will automatically exit the SOYO CD to begin the driver installation program. When the installation is complete, most drivers require to restart your system before they can become active.

Step 3. Check the Latest Releases

Click the 'Check the latest Releases' button to go the SOYO Website to automatically find the latest BIOS, manual and driver releases for your motherboard. This button will only work if your computer is connected to the internet through a network or modem connection. Make sure to get your modem connection up before clicking this button.

(Internet Explorer is a Microsoft Trademark)*

Quick Trouble shoot tips

Video (no display) related issues

I built a new computer system using a Soyo board and nothing happens when turning it on, no video and no beeps from the PC speaker. What is happening and how can it be fixed?

No screen and no beeps mean that your CPU and motherboard do not work at all. It could be that the CPU is not seated correctly or that a component on the M/B is grounded (shorted) with the case. Also make sure to check the voltage setting switch (110V/220V) on the back of the power supply. To isolate the problem do the following:

1. Press and hold down on the “Ins” (insert) key while turning on the computer until you get video. If you do not get video then,
2. Double-check jumpers setting on you motherboard and remove all add-on cards, unplug all hard-disk and floppy-disk drive cables and see if you can hear some beeps. If you still do not get any beeps, then try putting the motherboard on the table (to isolate it from the case) with the CPU and speaker only, and give it one more try.

I hear a series of beeps and I do not get anything from my monitor. What could be wrong?

The following lists some basic beep codes and their possible meanings:

- One long beep and 3 very short beeps - The video card is not detected by the motherboard. Please re-seat your video card. If you are using an AGP card, please push your AGP card down real hard. You may have to push VERY hard without the AGP card mounting screw. Make sure not to insert the card the other way around.
- Continuous beeps – One or more of the memory modules is not seated correctly in its socket.

My PCI VGA card works fine with my system, but when I put in a new AGP card, it does not give me any video. Is my AGP slot bad?

This is a common problem with AGP video cards. The reason is that your AGP card did not get seated into the AGP slot fully and firmly. Please push your AGP card down into the socket real hard, it should snap twice. You may have to unscrew the AGP card to allow the card to go further down. Do take care not to damage the card by using too much force.

I get distorted video my AGP card right after I save my bios. Why is that?

The cause is likely that your AGP card is not running at the correct bus speed. To fix this, please clear the CMOS via JP5 and if it still does not work, please upgrade your motherboard bios to the latest version.

BIOS Issues

Where can I find the BIOS revision of my mainboard?

It will be displayed on the up-left corner on the screen during boot-up. It will show as your board type followed by the revision number, such as 5EH_2CA1 (meaning revision 2CA1 for the SY-5EH board) or 6BA+ IV_2AA2 which means SY-6BA+ IV motherboard with 2AA2 bios.

Where can I find the latest BIOS of my motherboard?

Please go to the technical support page of one of the SOYO websites (Taiwan: www.soyo.com.tw), and look up your motherboard to find the latest BIOS revision.

Hard disk, floppy drive, CD-ROM etc

When I boot up my new computer I got "floppy boot failure" and the LED on the floppy stays on

Make sure the red wire of floppy ribbon cable goes to Pin1 on the floppy drive side (don't trust the "key lock" or "notch") and use the end-connector of the cable (don't use middle one).

Modem issues

I get an "I/O Conflict" message when I turn on my system and I can not get my modem to work

What you need to do is to disable 'COM2' (or UART2 or serial port 2) in the bios under integrated peripheral setup.

I have installed my modem drivers several times and I still cannot get my modem to work. Why?

If you are sure that the modem driver has been installed correctly, then you need to install the via 4 in 1 driver from the SOYO CD, this is because Windows does not properly recognize relatively new chipsets.

I can not get my board to run properly.

Please make sure you have the latest bios and driver from the SOYO web site at: <http://www.soyo.com>

SY-K7VTA PRO Quick Start Guide

How to contact us:

- If you are interested in our products, please contact the SOYO sales department in the region you live.
- If you require Technical Assistance, please contact our Technical Support in the region you live.

SOYO prefers Email as communication medium, remember to *always add to the email the country that you live in.*

TAIWAN

SOYO COMPUTER INC.

No. 21 Wu-Kung 5 Rd., Hsin Chuang
City, Taipei Hsien, Taiwan, R.O.C

TEL: 886-2-22903300

FAX: 886-2-22983322

<http://www.soyo.com/>

Email: info@mail.soyo.com

JAPAN

SOYO COMPUTER

SOYO BLDG, 1-23-14, Hyakunincho,
Shinjyuku-ku, Tokyo Japan 169-0073

TEL: 81-3-3368-2188

FAX: 81-3-3368-2199

<http://www.soyo.co.jp/>

Email: support@soyo.co.jp

USA

SOYO INC.

41484 Christy Street, Fremont, CA
94538, USA

TEL: 1-510-226-7696

FAX: 1-510-226-9218

<http://www.soyousa.com/>

Email : sales@soyousa.com

CHINA

GING MEI JEI LTD

Room 304, Phoenix Mansion, No. 165
Haidian Road, Haidian District, Beijing
100080, China

TEL: 86-10-6251-0089

FAX: 86-10-6251-0311

<http://www.soyo.com.cn/>

Email: soyo@public.bat.net.cn

GM

SOYO Deutschland GmbH
(SAAT Technology GmbH)

August-Wilhelm-Kuhnholz-Str. 15
D-26135 Oldenburg (Oldb), Germany

TEL: 49-441-209-100

FAX: 49-441-203-442

<http://www.soyo.de/>

Email: sales@soyo.de

KOREA

SOYO TECHNOLOGY CO., LTD.

3 rd, F1, Wonhyo Bldg, 46-1,
Wonhyoro 3 Ga, yongsan Ku, Seoul
Korea

TEL: 882-716-2850

FAX: 882-704-2619

<http://www.soyo.co.kr/>

Email: soyo@soyo.co.kr

Hong Kong

Soyo (H.K.) Ltd.

5C, Big Star Centre, 8 Wang Kwong
Road, Kowloon Bay, Kowloon, HK

TEL: 852-2710-9810

FAX: 852-2710-9078

<http://www.soyo.com.hk/>

Email: soyo@hkstar.com

Edition: May 2001
Version 1.1
SY- K7VTA PRO
SERIAL

